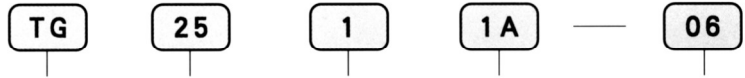


### TG Series Air Valve:

It is controlled by pneumatic signal, applicable to the places where the existence of power source is forbidden. The product is in simple structure, with reliable performance and easy operation. It is widely applied to the inflammable and explosive places such as coal hill, mine, natural gas, etc. There are multiple specifications for your choice.

**TG**  
(TG Series Air Valve)

### Ordering Code



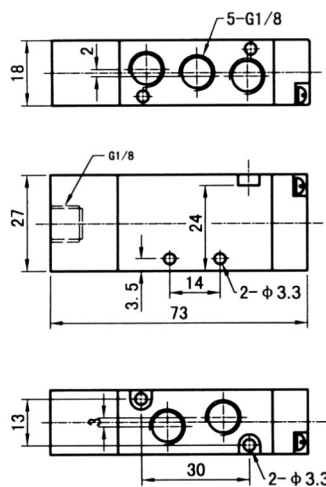
(Series Code): TG  
 (Valve Type): 25: (2 Position / 5 Ports)  
 35: (3 Position / 5 Ports)  
 (Connection Code): 1  
 (Control Form): 1A: Single Air Operated  
 2A: Double Air Operated  
 (Pipe Size): 06: G1/8  
 08: G1/4  
 10: G3/8  
 15: G1/2

### Technical Parameter

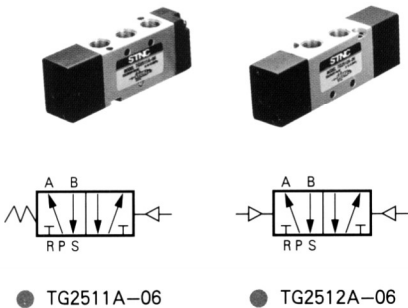
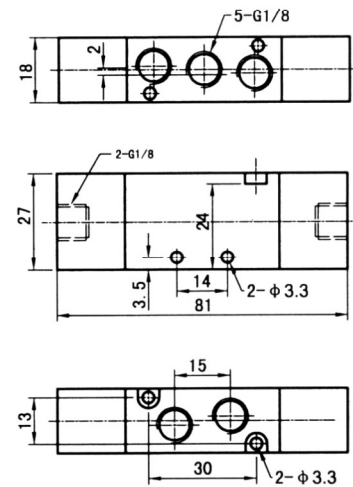
Item Specification	Valve Type	Pipe Thread	mm (Nominal Diameter)	Applicable Fluid	Pressure Range	Operating Method	Max Action Frequency	Lubrication	Applicable Temperature
TG2511A-06	2 Position / 5 Ports	G1/8	6	Compressed Air	0.15~0.8 MPa	Direct Action Type	5Cycle/Sec	Not Required	-5~50°C
TG2512A-06		G1/8	6						
TG2521A-08		G1/4	8						
TG2522A-08		G1/4	8						
TG2531A-10		G3/8	10						
TG2532A-10		G3/8	10						
TG2541A-15		G1/2	15						
TG2542A-15		G1/2	15						
TG3522A-08C	3 Position / 5 Ports	G1/4	8						
TG3532A-10C		G3/8	10						

### Figure Dimension

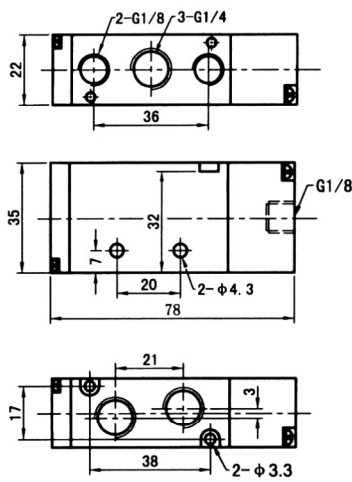
● TG2511A-06



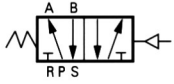
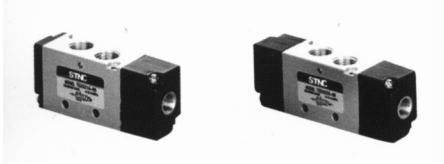
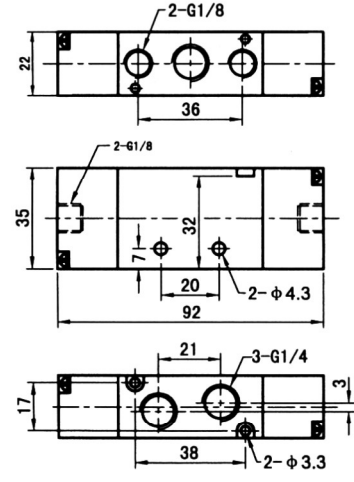
● TG2512A-06



● TG2521A-08



● TG2522A-08

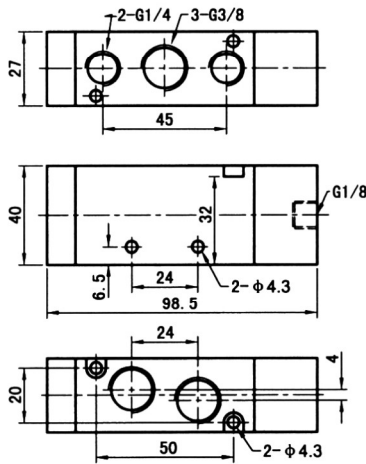


● TG2521A-08

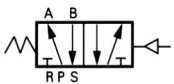
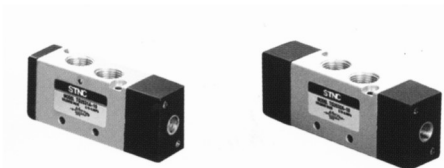
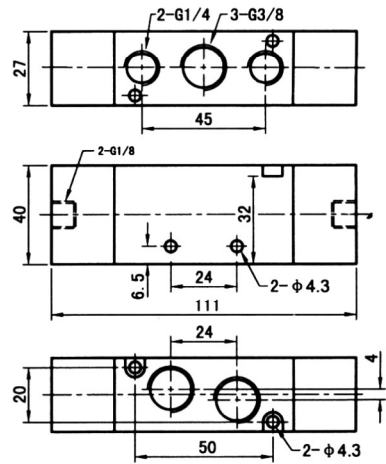


● TG2522A-08

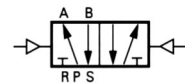
● TG2531A-10



● TG2532A-10

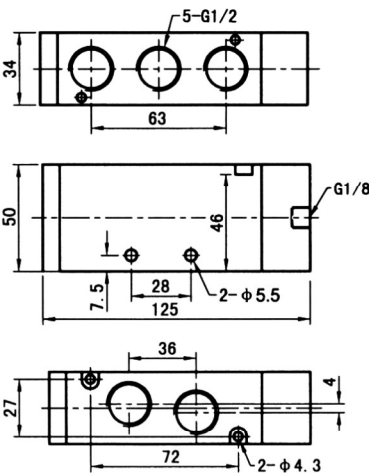


● TG2531A-10

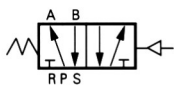
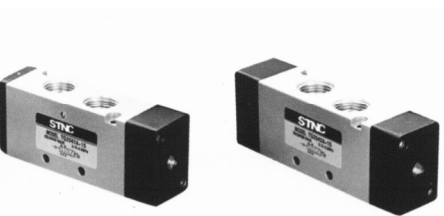
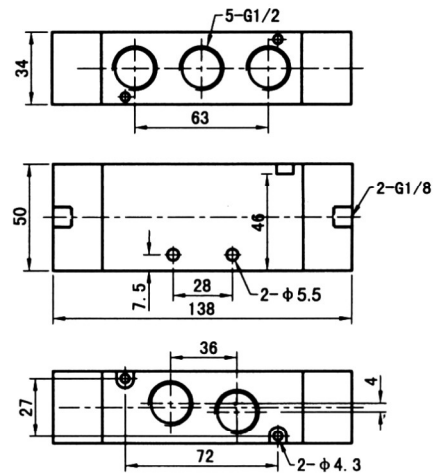


● TG2532A-10

● TG2541A-15



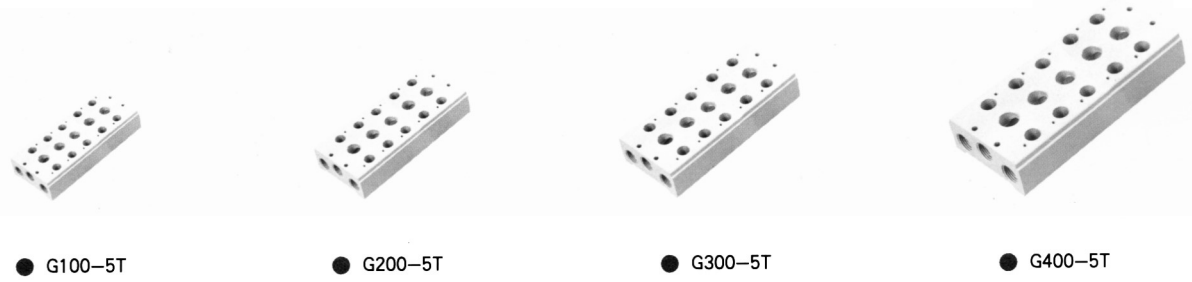
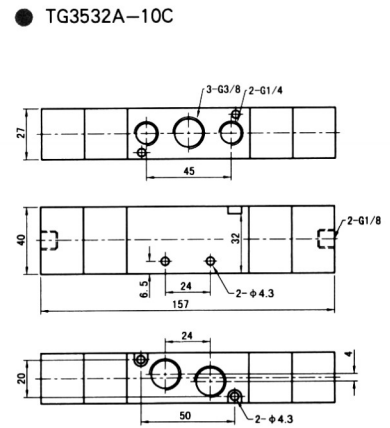
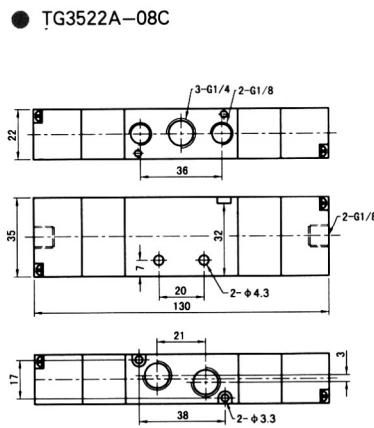
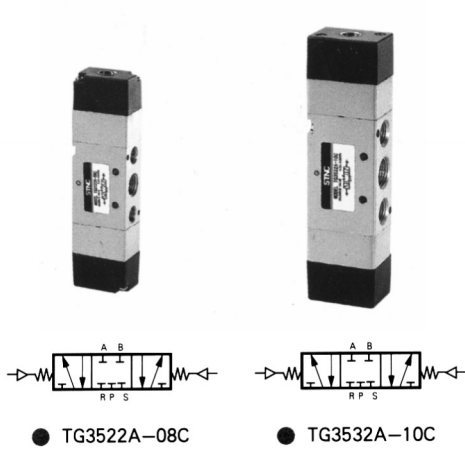
● TG2542A-15



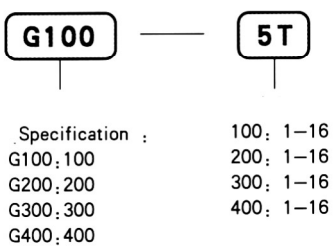
● TG2541A-15



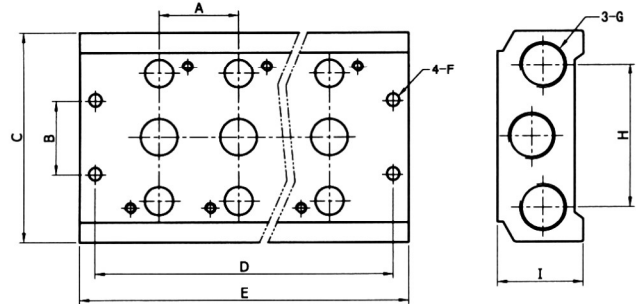
● TG2542A-15



### ● Ordering Code

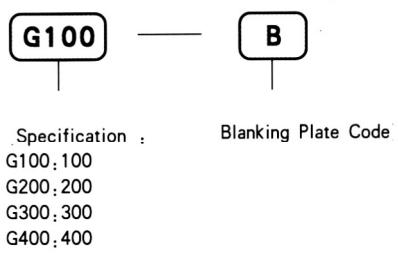


### ■ Figure Dimension



连接板型号 (Manifold Type)	A	B	C	D	E	F	G	H	I
G100 □ T	19	20	58	19(n-1)+28	19(n-1)+38	φ 4.5	G1/8	40	25
G200 □ T	23	20	60	23(n-1)+35	23(n-1)+46	φ 4.5	G1/4	42	25
G300 □ T	28	26	74	28(n-1)+45	28(n-1)+56	φ 4.5	G3/8	50	30
G400 □ T	35	32	100	35(n-1)+56	35(n-1)+70	φ 4.5	G1/2	65	41

### ● Ordering Code of Blanking Plate



### Use of Blanking Plate:

If the stations of Manifold Block are more than the number of solenoid valves, it can pressurize superabundance stations temporarily. Replace it with increasing valves when need.